

PUMP SHOTGUN

---

***OWNERS***  
***MANUAL***

---

## INTRODUCTION

Thank you for buying our firearm, and welcome to the family. We realize that you had many products to choose from and hope you feel as we do, that you purchased the finest quality production firearm on the market today.

This Owner's Manual is designed to assist you in learning how to use and care for our Pump Shotguns. Please read it very carefully and follow all instructions and safety warnings.

In closing, let me assure you that we are committed to the hunter, shooter and sportsman; and delivering the uncompromising craftsmanship, performance and value that you require in all that we do.

Good Shooting!

**- SAFETY -  
FIRST AND FOREMOST**

**FIREARMS ARE DANGEROUS WEAPONS, WHICH CAN CAUSE SERIOUS INJURY OR DEATH. WHEN USING ANY FIREARM, SAFETY MUST BE YOUR FIRST AND CONSTANT CONCERN. READ AND UNDERSTAND THE FOLLOWING SAFETY RULES.**

**READ AND UNDERSTAND THE FOLLOWING SAFETY RULES**

**KNOW YOUR FIREARM.** Before assembling or using our Pump Shotguns, read and understand the instructions and safety warnings contained in this Owner's Manual in order to learn how to use the firearm safely and correctly.

**ALWAYS TREAT YOUR FIREARM AS IF IT WERE LOADED.** Use the manual safety button as outlined in this manual. Never move the safety to "FIRE" until YOU are ready to fire.

**KEEP THE MUZZLE POINTED IN A SAFE DIRECTION.** The safe direction may be "up" on some occasions, and "down" on others. Never point the muzzle toward anything not intended as a target.

**USE ONLY THE CORRECT AMMUNITION FOR YOUR FIREARM.** Be sure to use only the correct gauge and length ammunition for your Pump Shotguns as stamped on the left side of the barrel.

**ALWAYS UNLOAD YOUR FIREARM WHEN NOT SHOOTING.** Never transport or store a loaded firearm in a vehicle or building. Unload your firearm before climbing a fence or obstruction, or entering a slippery area.

**MAINTAIN YOUR FIREARM.** Keep the barrel clean and free of obstructions. Clean your firearm regularly and have it inspected periodically to make sure it is mechanically correct and functioning properly. Worn or damaged parts can be dangerous.

**DO NOT MAKE ADJUSTMENTS.** Never make changes or alterations to your firearm. Do not make any adjustments to the trigger, or change the shape or size of the sear or other parts. Repair should be performed by the Authorized Service Centers.

**MAKE YOURSELF SAFE.** Always wear shooting glasses. When target shooting or plinking, always use ear protection. If your firearm is equipped with a muzzle brake or is "ported", wear ear protection at all times. Never drink alcoholic beverages before or during shooting.

**REMEMBER - FIREARMS SAFETY DEPENDS ON YOU!!**

## - INDEX -

- SAFETY - FIRST AND FOREMOST
- INDEX
- MANUAL SAFETY OPERATION
- AMMUNITION
- MULTI-CHOKE™ TUBES
  - Removing choke tubes
  - Installing choke tubes
- INITIAL ASSEMBLY INSTRUCTIONS
  - Removing magazine cap
  - Assembling barrel to receiver
- OPERATING INSTRUCTIONS
  - Opening the bolt
  - Checking for and clearing bore obstructions
  - To check the barrel for obstructions
  - Clearing a bore obstruction
  - Closing the bolt
  - Loading the shotgun
  - Firing the shotgun
  - Unloading the shotgun
- DISASSEMBLY INSTRUCTIONS
  - Disassembly of barrel from receiver
  - Disassembly of trigger assembly from receiver
  - Disassembly of bolt from receiver
  - Removal of choke tubes
  - Disassembly of the magazine plug
- CLEANING YOUR PUMP SHOTGUN
  - Cleaning the bore
  - Cleaning the outside of the barrel
  - Cleaning choke tubes
  - Cleaning the receiver
  - Cleaning the bolt
  - Cleaning the magazine
  - Cleaning the trigger assembly
  - Cleaning the forearm and butt stock
  - Rust prevention and removal

• **ASSEMBLY OF YOUR PUMP SHOTGUN**

- Assembly of trigger assembly to receiver
- Assembly of bolt to receiver
- Assembly of barrel to receiver
- Assembly of magazine plug to magazine tube
- Storing your shotgun
- Suggestions for getting top performance from your pump shotgun
- Parts list
- Exploded view diagram (complete gun)
- Ten commandments of firearms safety
- Exercise extreme caution

## OUR PUMP SHOTGUNS

Our Pump Shotguns are manually operated slide action shotguns capable of feeding and firing both target and hunting loads up to 3 inch.

With proper care as outlined in this manual, your Pump Shotgun should give you many years of dependable use and shooting pleasure.

The picture below shows the main parts of our Pump Shotgun. Please refer to it when reading this manual. It will aid in understanding the terminology.

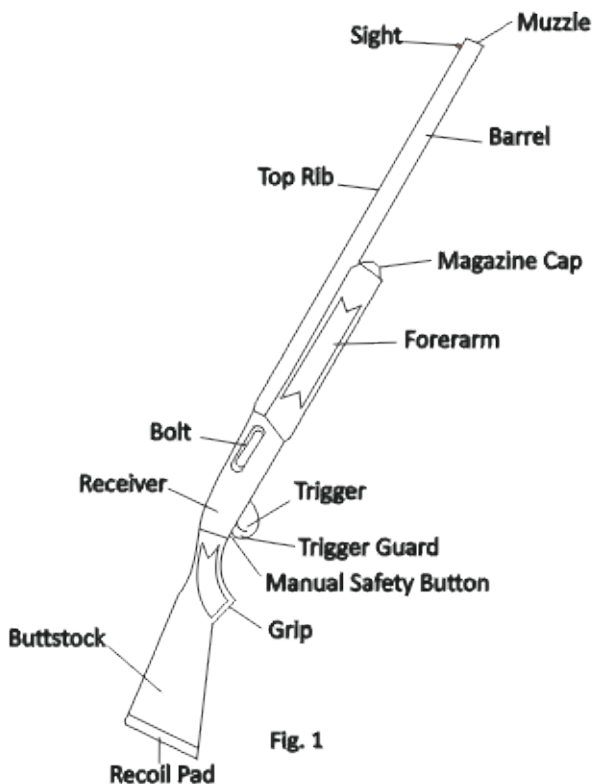


Fig. 1

### LEAD WARNING!

DISCHARGING FIREARMS IN POORLY VENTILATED AREAS, CLEANING FIREARMS, OR HANDLING AMMUNITION MAY RESULT IN EXPOSURE TO LEAD OR OTHER SUBSTANCES KNOWN TO CAUSE BIRTH DEFECTS, REPRODUCTIVE HARM AND OTHER SERIOUS PHYSICAL INJURY. HAVE ADEQUATE VENTILATION AT ALL TIMES. WASH HANDS THOROUGHLY AFTER EXPOSURE.

## MANUAL SAFETY OPERATION

The manual safety on our Shotgun is a button-type safety located on the rear of the trigger guard. When in proper condition and correctly engaged in the "SAFE" position, the manual safety blocks the trigger and prevents accidental discharge under normal usage.

### WARNING!!

Never depend on any mechanical safety mechanism or device to prevent the dangers of careless handling or pointing a firearm in an unsafe direction.

When manipulating the manual safety; keep all fingers outside the trigger guard.

The shotgun will fire if the trigger is pulled when the safety is not in the "SAFE" position.

The safety should always be in the "SAFE" position except when the shotgun is intended to be fired. Never pull the trigger when the safety is in the "SAFE" position.

The manual safety can be moved between the "SAFE" and "FIRE" positions at any time, regardless of whether or not the shotgun is loaded or cocked. To minimize the possibility of accidental discharge, it is strongly recommended that the safety always be placed in the "SAFE" position except when the shotgun is intended to be fired.

To engage the manual safety, push the safety button from left to right with your thumb.

To disengage the manual safety, push the safety button through the trigger guard from right to left with your thumb or index finger until it stops and stays in place in the "FIRE" position (a red mark will be visible on the safety button to the left of the trigger guard.)

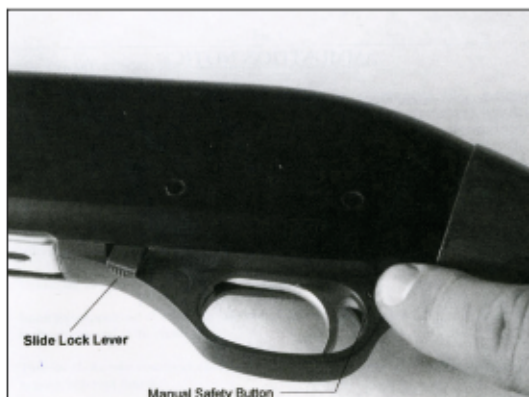


Fig. 2

## **AMMUNITION**

Our pump shotguns are chambered only for 12. Ga. Shells in 2 ¾ and 3 inches lengths, for which factory loaded ammunition manufactured in accordance with U.S. industry standards is commercially available. Barrels marked for 3" shot shells can be safely used for both 2¾ and 3" shot shells. Choke are crafted from high grade steel and are certified for steel shot through modified choke constriction.

Exercise care to assure that you are using the correct ammunition for your shotgun. Always make certain that the gauge indicated on the shot shell headstamp matches the gauge marked on the barrel of your shotgun, and that the length of the shell is correct for your shotgun.

### **WARNING!!**

Use of incorrect or overloaded ammunition can result in death or serious injury and damage to your firearm due to excessive pressure. Even the strongest firearm can be "blown up" by excessive pressure. Use only factory-loaded ammunition of the correct gauge and length for your shotgun as marked on the shotgun's barrel.

The accidental chambering and discharge of shells of the wrong gauge or length can result in damage to your gun and possible injury to the shooter. Carry only the proper gauge ammunition with you when shooting. A 20 ga. shell will enter a 12 ga. chamber far enough to leave room for a 12 ga. shell behind it. A damaged gun and possible injury to the shooter will result if the barrel is fired. Also, a 3½ inch shell will chamber into a 3 inch chamber, but the crimp will unfold into the forcing cone, causing possible unsafe pressures.

Always wear shooting glasses and hearing protectors when shooting.

### **AMMUNITION NOTICE**

The Manufacturing company SPECIFICALLY DISCLAIMS RESPONSIBILITY FOR ANY INJURY OR DAMAGE WHATSOEVER OCCURRING IN CONNECTION WITH, OR AS A RESULT OF, OR IN THE CONNECTION WITH, THE USE OF FAULTY, OR NON-STANDARD, ANY "REMANUFACTURED" OR HAND-LOADED OR RELOADED AMMUNITION, OR OF AMMUNITION OTHER THAN FOR WHICH THE FIREARM WAS ORIGINALLY CHAMBERED.



## MULTI-CHOKE™ TUBES

Each of our new Pump Shotguns is equipped with interchangeable Multi-Choke™ choke tubes and one choke tube wrench. One of the choke tubes is installed in the muzzle of the barrel, and the remaining choke tubes are packaged in the shipping box.

These Multi-Choke™ tubes are crafted from high grade steel and are certified for steel shot through modified choke constrictions.



### **REMOVING CHOKE TUBES**

Choke tubes may be removed with the barrel disassembled from the shotgun or with the barrel assembled to the shotgun by following these simple instructions. (NOTE: If removing choke tubes with the barrel removed from the shotgun, begin from instruction 110. 3.)

When removing a choke tube from a barrel assembled to the shotgun, keep the muzzle of the shotgun pointed in a safe direction, and keep your fingers out of the trigger guard and away from the trigger at all times.

1. Move the manual safety button to "SAFE" position (refer to Manual Safety Operation, page 6), before removing a choke tube from a barrel assembled to a shotgun.
2. Unload the shotgun (refer to Unloading the Shotgun, page 15).
3. Insert the stepped end of the choke tube wrench into the notches in the muzzle end of the choke tube.
4. Turn the choke tube counter-clockwise with the wrench until it emerges from the muzzle sufficiently to grasp with your fingers.
5. Continue turning the choke tube counter-clockwise with your fingers until it is free to be removed from the muzzle.

## INSTALLING CHOKE TUBES

Choke tubes may be installed into a barrel disassembled from the shotgun or with the barrel assembled to the shotgun, by following these simple instructions. NOTE: If installing choke tubes with the barrel removed from the shotgun, begin from instruction no. 3.

When installing a choke tube into a barrel assembled to the shotgun, keep the muzzle of the shotgun pointed in a safe direction, and keep your fingers out of the trigger guard and away from the trigger at all times.

1. Move the manual safety button to the "SAFE" position (refer to Manual Safety Operation, page 6), before installing a choke tube into a barrel assembled to a shotgun.

2. Unload the shotgun (refer to Unloading the shotgun, page 15).

3. Insert the threaded end of the choke tube into the muzzle of the barrel, and screw it into the barrel as far as possible with your fingers, turning it in a clock-wise direction.

4. Insert the stepped end of the choke tube wrench into the notches in the muzzle end of the choke tube, and continue turning clock-wise until the choke tube is seated, tightening snugly.

CAUTION: To prevent damage to barrel or choke tube threads, do not over-tighten.

### **WARNING!**

Loose choke tubes may cause bore obstructions which could result in injury or death to the shooter or bystanders and damage to the shotgun. Tighten choke tubes frequently – before, during and after shooting.

## INITIAL ASSEMBLY INSTRUCTIONS

### **REMOVING MAGAZINE CAP**

Our Pump Shotguns are packaged in "take down" condition - the barrel is separated from the receiver assembly, with the forearm assembly attached to the receiver assembly, in the shipping carton in which the shotgun is received by the dealer. The shotgun may also have been stored in "take down" condition. Before assembly of the shotgun, the magazine cap must be removed from the magazine tube.

Remove the magazine cap from the receiver assembly as follows:

1. Grasp the magazine cap with one hand while holding the butt stock or receiver with the other hand.
2. Remove the magazine cap by turning it counter-clockwise until it separates from the magazine tube.



Fig. 5

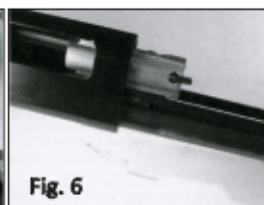
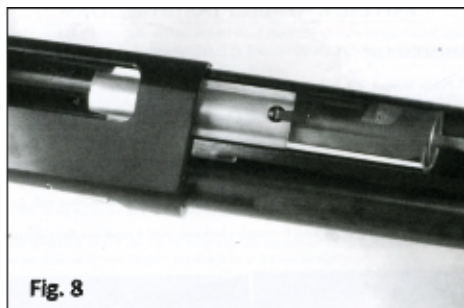


Fig. 6

### **ASSEMBLING BARREL TO RECEIVER**

Keep the muzzle of the shotgun pointed in a safe direction, and keep your fingers out of the trigger guard and away from the trigger at all times.

1. Visually examine the barrel to make sure there is no shot shell in the chamber or obstruction in the bore, and all surfaces are free of dirt and excess oil.
2. Move the forearm forward until the bolt protrudes slightly from the front of the receiver, fig. 6).
3. Grasp the receiver and buttstock assembly with one hand, while grasping the barrel with your other hand.
4. Align the barrel shank on chamber end of the barrel with the bolt (refer to Fig.8) and the barrel support ring with the magazine tube.
5. The bolt must be in the forward position on the slide to allow the locking block to retract.
6. Insert the barrel shank into the receiver until the barrel stops against the receiver.
7. Move the forearm rearward slightly as the barrel seats against the receiver.
8. With the barrel fully seated, place the magazine cap on the magazine tube and turn clockwise until seated.



**WARNING!!** If ammunition is present in the barrel's chamber, the receiver loading port or the magazine, the shotgun will be loaded, cocked and ready to fire by closing the bolt and pulling the trigger with the safety "Off (in the "FIRE" position).

## OPERATING INSTRUCTIONS

### OPENING THE BOLT

Keep the muzzle of the shotgun pointed in a safe direction, and keep your fingers out of the trigger guard and away from the trigger at all times.

1. Move the manual safety button to the "SAFE" position (refer to Manual Safety Operation, page 6).
2. Unload the gun (refer to Unloading the Shotgun, page 15).
3. While resting the butt pad against your thigh, grasp the shotgun forearm firmly with one hand.
4. With the other hand depress the slide lock lever and pull the forearm rearward until the bolt stops at the rear of the receiver (refer to fig. 2, page 6).

### CHECKING FOR AND CLEARING BORE OBSTRUCTIONS

The barrel of your shotgun should always be checked for obstructions before assembly, before loading and immediately following any occurrence in the field which might result in mud, dirt or other debris entering the bore.

**WARNING!!** Never attempt to check for or clear a bore obstruction by loading a shot shell into the chamber of the barrel and firing! If there is a bore obstruction this will cause excessive pressures which may result in death or serious injury and damage to your shotgun.

### TO CHECK THE BARREL FOR OBSTRUCTIONS

Keep the muzzle of the shotgun pointed in a safe direction, and keep your fingers out of the trigger guard and away from the trigger at all times.

1. Move the manual safety button to the "SAFE" position (refer to Manual Safety Operation, page 6).
2. Unload the shotgun (refer to Unload the Shotgun, page 15).
3. Disassemble barrel from receiver (refer to Disassembly of Barrel from Receiver, page 15).
4. Visually check the bore for obstructions by looking through the barrel from the breech end through the muzzle.

### CLEARING A BORE OBSTRUCTION

1. Push a shotgun bore cleaning tool through the bore from the breech end until the end of tool exits the muzzle.
2. If the obstruction cannot be easily cleared, contact the Authorized Service Centers or your local gunsmith.

### CLOSING THE BOLT

Keep the muzzle of the shotgun pointed in a safe direction, and keep your fingers out of the trigger guard and away from the trigger at all times.

1. Move the manual safety button to the "SAFE" position (refer to Manual Safety Operation, page 6).
2. Hold the shotgun with one hand and grasp the forearm firmly with the second hand.
3. Push the forearm all the way forward.

**WARNING!!** If a shot shell is in the receiver loading port or the barrel chamber and the forearm is then pushed forward closing the bolt and the manual safety is not in the "SAFE" position, the shotgun is now ready to fire. Do not touch the trigger until YOU are ready to fire.

### **WARNING!!**

Use of incorrect or overloaded ammunition can result in death or serious injury and damage to your firearm due to excessive pressure. Even the strongest firearm can be "blown up" by excessive pressure. Use only factory-loaded ammunition of the correct gauge and length for your shotgun as marked on the shotgun's barrel. The accidental chambering and discharge of shells of the wrong gauge can result in damage to your gun and possible injury to the shooter. Carry only the proper gauge ammunition with you when shooting. A 20 ga. shell will enter a 12 ga. chamber far enough to leave room for a 12 ga. shell behind it. A damaged gun and possible injury to the shooter will result if the barrel is fired. Also, a 3 1/2-inch shell will chamber into a 3-inch chamber, but the crimp will unfold into the forcing cone, causing possible unsafe pressures.

Always wear shooting glasses and hearing protectors when shooting.



## LOADING THE SHOTGUN

### AMMUNITION NOTICE

THE MANUFACTURING COMPANY SPECIFICALLY DISCLAIMS RESPONSIBILITY FOR ANY INJURY OR DAMAGE/WHATSOEVER OCCURRING IN CONNECTION WITH, OR AS A RESULT OF, OR IN CONNECTION WITH, THE USE OF FAULTY, OR NON-STANDARD, OR "REMANUFACTURED" OR HAND-LOADED OR RELOADED AMMUNITION, OR ANY AMMUNITION OTHER THAN FOR WHICH THE FIREARM WAS ORIGINALLY CHAMBERED.

### TO LOAD THE MAGAZINE

Keep the muzzle of the shotgun pointed in a safe direction, and keep your fingers out of the trigger guard and away from the trigger at all times.

1. Move the manual safety button to the "SAFE" position (refer to Manual Safety Operation, page 6).
2. Open the bolt (refer to Opening the Bolt, Page 11) and visually check to make sure no shell is in the receiver ejection port.
3. Close the bolt. (Refer to Closing the Bolt Page 12)
4. Referring to Fig. 10, insert desired number of shotshells of the proper gauge/length (refer to Ammunition, page 7) into the magazine through the loading port by pushing each shell forward fully into the magazine until it is held in place by the shell latch.



Fig. 10

### TO FEED A SHELL FROM THE MAGAZINE INTO THE CHAMBER

Keep the muzzle of the shotgun pointed in a safe direction, and keep your fingers out of the trigger guard and away from the trigger at all times.

1. Visually check the manual safety button to make sure it is in the "SAFE" position (refer to Manual Safety Operation, page 6).

2. Press the slide lock lever to release the bolt (refer fig. 2, page 6) Pull the forend to the rear to stage the Shell.

3. Push the forend all the way forward to cycle the shell into the chamber.

**WARNING!!** If the manual safety is not in the "SAFE" position, the shotgun is now ready to fire. Do not touch the trigger until YOU are ready to fire.

To Single-load the Chamber without Shells in the Magazine.

Keep the muzzle of the shotgun pointed in a safe direction, and keep your fingers out of the trigger guard and away from the trigger at all times.

1. Move the manual safety button to the "SAFE" position (refer to Manual Safety Operation, page 6).

2. Open the bolt of the shotgun (refer to Opening the Bolt, Page 11).

3. Drop a shot shell of the proper size (refer to Ammunition, page 7) load directly into the ejection port, with the crimped end forward.

4. Push the forend all the way forward (refer to Closing the Bolt, Page 12) closing the bolt and feed the shell into the chamber.

**WARNING!!** If the manual safety is not in the "SAFE" position, the shotgun is now ready to fire. Do not touch the trigger until YOU are ready to fire.

#### FIRING THE SHOTGUN

Pulling the trigger fires the shotgun when a shot shell is in the chamber.

1. With shot shell in the chamber of the barrel, and keeping the muzzle of the shotgun pointed in a safe direction and your fingers out of the trigger guard and away from the trigger, move the manual safety button to the "FIRE" position (refer to Manual Safety Operation, page 6).

2. Hold the recoil pad snugly to your shoulder and carefully point the muzzle of the shotgun at your intended target.

3. Squeeze (pull) the trigger with steadily increasing pressure until the shotgun fires

**WARNING!!** Do not touch the trigger until you are actually ready to fire the shotgun, or an unintended discharge may occur, possibly resulting in death or injury to a bystander, or damage to an unintended target.

4. Unless an immediate second shot is intended, immediately:

- Remove your finger from the trigger;
- Unload the shotgun (refer to Unloading the shotgun, page 15).

## UNLOADING THE SHOTGUN

***ALWAYS UNLOAD YOUR SHOTGUN IMMEDIATELY AFTER YOU FINISH SHOOTING.***

Keep the muzzle of the shotgun pointed in a safe direction, and keep your fingers out of the trigger guard and away from the trigger at all times.

1. Move the manual safety button to the "SAFE" position (refer to Manual Safety Operation, page 6).
2. Pull the forend rearward to extract the shell from the chamber.
3. Push the lifter upwards towards the bolt to unload the magazine.
4. Press the front of the feed latch allowing the shot shell to slide rearward out of the magazine tube. The feed latch is located inside of the loading port on the right side of the receiver (refer to Exploded View Diagram part 49, page 21).
5. Repeat step 4 until the magazine is empty.
6. Visually confirm that there are no shot shells remaining in the magazine or chamber.

## DISASSEMBLY INSTRUCTIONS

### DISASSEMBLY OF BARREL FROM RECEIVER

Keep the muzzle of the shotgun pointed in a safe direction, and keep your fingers out of the trigger guard and away from the trigger at all times.

1. Unload the shotgun (refer to Unloading the Shotgun, page 15).
2. Close the bolt by moving the forearm forward.
3. Unscrew the magazine cap by turning it in a counter clock-wise direction until easily detached.
4. Remove the barrel by grasping firmly and pushing forward (in the direction of the muzzle) until the barrel tang is clear of the receiver ring.

### DISASSEMBLY OF TRIGGER ASSEMBLY FROM RECEIVER

**Caution:** Make sure the hammer is in the cocked position prior to removing the trigger assembly from the receiver. This is achieved by pulling the forend rearward then forward. Have the safety in the "ON" ("SAFE") position while cleaning the trigger assembly. Do not pull the trigger while the trigger assembly is outside of the receiver.

1. Unload the Shotgun (refer to Unloading the Shotgun page 15) and disassemble the barrel from the receiver, (refer to Disassembly of Barrel from Receiver, page 15)
2. Move the manual safety button to the "SAFE" position (refer to Manual Safety Operation, page 6).
3. Pull bolt to rear then forward to make sure the hammer is cocked.
4. With a hammer and punch push the receiver pins through the receiver (the pins should be pushed from the right side of the receiver towards the left side) (refer to Fig. 12) until the pins are out far enough to be grasped by hand, and remove the pins from the receiver.
5. Pull the trigger assembly straight out from the receiver.



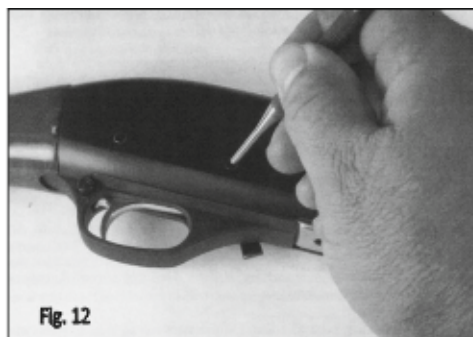


Fig. 12

#### **DISASSEMBLY OF BOLT FROM RECEIVER**

- 1.Remove barrel (refer to Removing barrel from Receiver Assembly, page 15)
- 2.Remove forearm by sliding the forearm assembly forward until the bolt assembly clears the receiver.
- 3.The bolt is exposed and available to lift off the slide assembly.

#### **REMOVAL OF CHOKE TUBES**

Remove Multi-Choke1M choke tubes as describe under Removing Choke Tubes, Page 8.

*Further disassembly of the shotgun is not recommended. If further disassembly is required, contact the Authorized Service Center or your local gunsmith.*

#### **DISASSEMBLY OF THE MAGAZINE PLUG**

Each of our pump shotguns is originally equipped with the magazine plug installed to restrict the magazine capacity to 2 shot shells, in compliance with the Federal Migratory Bird Treaty Act, federal migratory bird hunting regulations and some state laws. Removal of this magazine plug will result in a maximum magazine capacity of 5- 23/4 shot shells or 4-3" shot shells.

**WARNING!!** Taking the Pump Shotgun into the field without the magazine plug installed may result in citation and/or prosecution for violation of Federal Migratory Bird Treaty Act and/or federal regulations or state law.

1. Unscrew the magazine cap by turning it in a counter clock-wise direction until easily detached (refer to Fig. 5).
2. Remove Magazine plug blocker from the magazine tube by placing the index finger under the protruding radiuses of the magazine plug blocker
3. Pushing the magazine plug blocker into the magazine tube approximately 3/8"
4. Rotate the magazine plug blocker upward until a side of the magazine plug blocker protrudes above the magazine tube
5. With the other hand grasp the magazine plug blocker to pull it out of the magazine tube
6. Screw the magazine cap on to the magazine tube by turning it in a clock-wise direction until seated
7. Reference Fig. 14

*Further disassembly of the shotgun is not recommended. If further disassembly is required, contact the Authorized Service Center or your local gunsmith.*

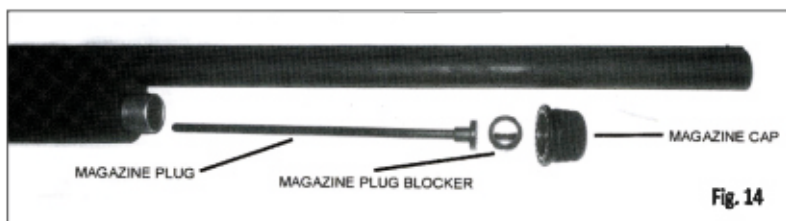


Fig. 14

## CLEANING YOUR PUMP SHOTGUN

Any firearm requires regular cleaning and periodic maintenance. To assure safe and reliable functioning of your Pump Shotgun, it is very important that you clean it immediately after each use, and periodically during extended storage periods, to remove powder residue, dirt, dust and excess lubricant, and to prevent rust. During cleaning, inspect components to determine whether they are in proper working order.

A basic cleaning kit consists of proper-sized cleaning rod, bore brush(es) and patches; gun cleaning solvent, gun lubricant, and lint-free cloths. Additionally, tooth brushes, cotton swabs and pipe cleaners are very handy tools for cleaning away dirt in hard to reach places.

To properly clean your shotgun, it must first be disassembled (refer to Disassembly Instructions, page 15), the parts and components cleaned as discussed below, then reassembled (refer to Assembly Instructions, page 19).

**CAUTION:** Apply solvents and lubricants properly and sparingly. Do not spray or apply solvents or lubricants directly on ammunition. Solvents and lubricants may affect the propellant, causing it not to ignite, but the energy from the primer may be sufficient to propel the propellant, wad and shot column into the bore of the barrel, causing an obstruction, and resulting in damage to the shotgun and serious injury to the shooter and bystanders upon firing a subsequent shot shell.

#### **CLEANING THE BORE**

1. Apply gun cleaning solvent to a bore cleaning brush of the proper size attached to the cleaning rod.
2. Push the brush all the way through the barrel bore several times from the chamber end.
3. Insert the brush into the muzzle of the barrel only far enough to encounter the threads for the choke tube, and twist it several times.
4. With a clean patch inserted in the tip attached to the cleaning rod, push the rod all the way through the barrel bore from the chamber end until the cloth emerges from the muzzle. Remove the dirty patch and withdraw the rod.
5. Repeat step 4 as many times as needed until the patch is clean as it emerges from the muzzle.
6. Using a clean patch or lint-free cloth wrapped around the tip of your finger or similarly shaped object, remove all solvent from the muzzle and from the choke tube threads inside the barrel bore.
7. Insert a patch saturated with gun lubricant into the cleaning rod tip and push it through the bore from the chamber end. Remove the patch and withdraw the rod.
8. Insert a dry, clean patch into the cleaning rod tip and push it through the bore from the chamber end, to remove excess lubricant. Remove the patch and withdraw the rod.
9. Using a clean patch or lint-free cloth wrapped around the tip of your finger or similarly shaped object, apply a light coat of gun lubricant to the choke tube threads and muzzle of the barrel bore.

**WARNING!!** Excess lubrication in the bore or chamber of any firearm may create excessive chamber pressures or a partial bore obstruction, resulting in possible damage to the firearm and serious injury to the shooter and bystanders upon firing. **BE SURE ALL EXCESS LUBRICANT HAS BEEN REMOVED.**

#### **CLEANING THE OUTSIDE OF THE BARREL**

1. Using a patch or clean cloth saturated with cleaning solvent, wipe down all accessible surfaces of the barrel, rib and barrel ring. (A clean tooth brush may be handy for cleaning the corners and recesses of the rib and barrel ring.)
2. With a clean, dry, lint-free cloth, remove all cleaning solvent.
3. Using a patch or clean cloth, apply a light coat of gun lubricant to the outside surfaces of the barrel, rib and barrel ring, being careful to remove any excess lubricant.

#### **CLEANING CHOKE TUBES**

1. Apply gun cleaning solvent to a bore cleaning brush of the proper size attached to the cleaning rod.
2. Push the brush all the way through the choke tube several times.
3. With a clean patch inserted in the tip attached to the cleaning rod, push the rod all the way through the choke

tube until the patch emerges from the other end. Remove the dirty patch and withdraw the rod.

4.Repeat step 3 as many times as needed until the patch is clean as it emerges from the choke tube.

5.Insert a patch saturated with gun lubricant into the cleaning rod tip and push it through the choke tube. Remove the patch and withdraw the rod.

6.Insert a dry, clean patch into the cleaning rod tip and push it through the choke tube to remove excess lubricant. Remove the patch and withdraw the rod.

7.Using a patch or clean cloth saturated with cleaning solvent, wipe down the outside surfaces of the choke tube. (A clean tooth brush may be handy for cleaning the threads.)

8.With a clean, dry lint-free cloth, remove all cleaning solvent.

9.Using a patch or clean cloth, apply a light coat of gun lubricant to the outside surfaces of the choke tube, being careful to remove any excess lubricant.

#### CLEANING THE RECEIVER

1.Using a small lint-free cloth, clean the inside and outside of the receiver with gun-cleaning solvent and dry thoroughly with a clean cloth.

2.With a clean cloth or patch, apply a light coat of gun lubricant to all accessible surfaces of the receiver.

#### CLEANING THE BOLT

1.Using a small lint-free cloth, clean the inside and outside of the bolt assembly with gun-cleaning solvent; and dry thoroughly with a clean cloth. (A clean tooth brush may be handy for cleaning the recesses of the bolt)

2.With a clean cloth or patch, apply a light coat of gun lubricant to all accessible surfaces of the bolt.

#### CLEANING THE SLIDE FOREARM ASSEMBLY

1.Using a small lint-free cloth, clean the inside and outside of the slide and forearm assembly with gun-cleaning solvent; and dry thoroughly with a clean cloth. (A clean tooth brush may be handy for cleaning some areas of the slide and forearm assembly)

2.With a clean cloth or patch, apply a light coat of gun lubricant to all accessible surfaces of the slide and forearm assembly.

#### CLEANING THE MAGAZINE

1.Using a lint-free cloth, clean the outside of the magazine tube with gun-cleaning solvent; and dry thoroughly with a clean cloth .

2.With a clean cloth or patch, apply a light coat of gun lubricant to outside surface of the magazine tube.

#### CLEANING THE TRIGGER ASSEMBLY

Caution: Make sure the hammer is in the cocked position prior to removing the trigger assembly from the receiver. This is achieved by pulling the forearm to the rear. Make sure the safety is in the "ON" ("SAFE") position while cleaning the trigger assembly. Do not pull the trigger while the trigger assembly is outside of the receiver (refer to disassembly of trigger assembly from receiver page 15).

1-Using a small lint-free cloth, clean the outside of the trigger assembly and with a clean tooth brush, brush the top surface of the trigger assembly mechanism with gun-cleaning solvent; and dry thoroughly with a clean cloth.

#### **CLEANING THE FOREARM AND BUTT STOCK**

Usually, wiping the forearm and butt stock with a clean, dry cloth or a silicon cloth is all that is necessary. If you have been hunting or shooting in wet weather, allow the butt stock and forearm to dry thoroughly before storage.

#### **RUST PREVENTION AND REMOVAL**

During normal maintenance, after a thorough cleaning, allow 2-3 hours at room temperature, for all metal parts to dry completely. Then apply a liberal amount of high grade Gun Oil to all metal parts, wiping off any excess with a clean dry cloth. If rusting does occur it may only be surface rust due to excessive moisture. You may be able to remove it by using a plastic bristle gun cleaning brush and gun cleaning solvent.

#### **DO NOT ALLOW RUST TO GO UNTREATED!**

### **ASSEMBLY OF YOUR PUMP SHOTGUN**

#### **ASSEMBLY OF TRIGGER ASSEMBLY TO RECEIVER**

1. Push the trigger assembly into the receiver until the trigger assembly is flush with the bottom of the receiver. Push the trigger assembly rearward to seat the trigger assembly against the receiver, aligning the trigger pin holes in the trigger assembly and the receiver.
2. Press the trigger frame pin into the receiver until flush with the receiver side.

#### **ASSEMBLY OF BOLT TO RECEIVER**

Note: It is recommended to assemble the bolt to the receiver with the trigger assembly installed in the receiver.

1. Assemble the bolt assembly onto the slide arm assembly.
2. Place the tube of the forearm assembly over the magazine tube and move the slide toward the receiver, aligning the bolt with the receiver as the bolt enters the receiver opening.
3. Slide the bolt into the receiver.

#### **ASSEMBLY OF BARREL TO RECEIVER**

Assemble the barrel as described under ASSEMBLING BARREL TO RECEIVER, page 10.



## ASSEMBLY OF MAGAZINE PLUG TO MAGAZINE TUBE

1. Unscrew the magazine cap by turning it in a counter clock-wise direction until easily detached (refer to Fig. 5)
2. Remove Magazine plug blocker from the magazine tube by placing the index finger under the protruding radiuses of the magazine plug blocker
3. Pushing the magazine plug blocker into the magazine tube approximately 3/8"
4. Rotate the magazine plug blocker upward until a side of the magazine plug blocker protrudes above the magazine tube
5. With the other hand grasp the magazine plug blocker to pull it out of the magazine tube
6. Place the magazine plug into the magazine tube small end first until the second diameter on the magazine plug contacts the magazine spring retainer.
7. Place the magazine plug blocker on top of the magazine plug
8. Push the magazine plug blocker and magazine plug into the magazine tube until the magazine plug blocker contacts the end of the magazine tube
9. Rotate one corner of the magazine plug blocker into the magazine tube
10. Press the remainder of the magazine plug blocker into the magazine tube until the complete magazine plug blocker is inside the magazine tube
11. Remove your finger and the magazine plug blocker will stay inside the magazine tube
12. Reference Fig. 14

## STORING YOUR SHOTGUN

Your Pump Shotgun may be stored fully assembled (refer to Assembly Instructions, page, or in "take down" condition.

If storing your shotgun fully assembled, release the pressure on the hammer spring as follows:

1. Make certain the shotgun is not loaded by following unloading procedures (refer to Unloading the Shotgun, Page 15).
2. Close the bolt (refer to Closing the Bolt, page 12)
3. Pointing the muzzle of the shotgun in a safe direction, pull the trigger.

Do not store your shotgun in a leather case, scabbard or foam lined gun case. Leather and foam can attract moisture and cause rusting.

For your safety, and the safety of others, store your shotgun with a lock or other safety device properly installed; and store your ammunition in a separate, locked location.

## SUGGESTIONS FOR GETTING TOP PERFORMANCE FROM YOUR PUMP SHOTGUN

Check and tighten choke tubes frequently — before, during and after shooting. Choke tube threads may loosen with repeated recoil, which may result in changes in point of impact or damage to choke tube or barrel threads with extended use. The accuracy of any firearm can vary depending upon the brand and type of ammunition used in it. If your shotgun does not exhibit the consistent point of impact and shot pattern you expect, you should try several brands and types of ammunition, after referring to point 1, above, before concluding that it is "inaccurate".

DO NOT ALTER THE STOCK BEDDING IN ANY WAY. Once a stock has been altered, it cannot be reworked by our Service Department or an Authorized Service Center. Consult the factory before returning any product for inspection or repair.

#### **TEN COMMANDMENTS OF FIREARMS SAFETY**

Prevention is the solution to hunting and shooting casualties. Every hunting and shooting accident that has occurred could have been prevented. Most such accidents happen as a result of people ignoring basic firearms safety rules. Prevention involves knowing and obeying those basic safety rules. Responsible, knowledgeable, and safe hunters and shooters will learn, remember and follow these simple rules:

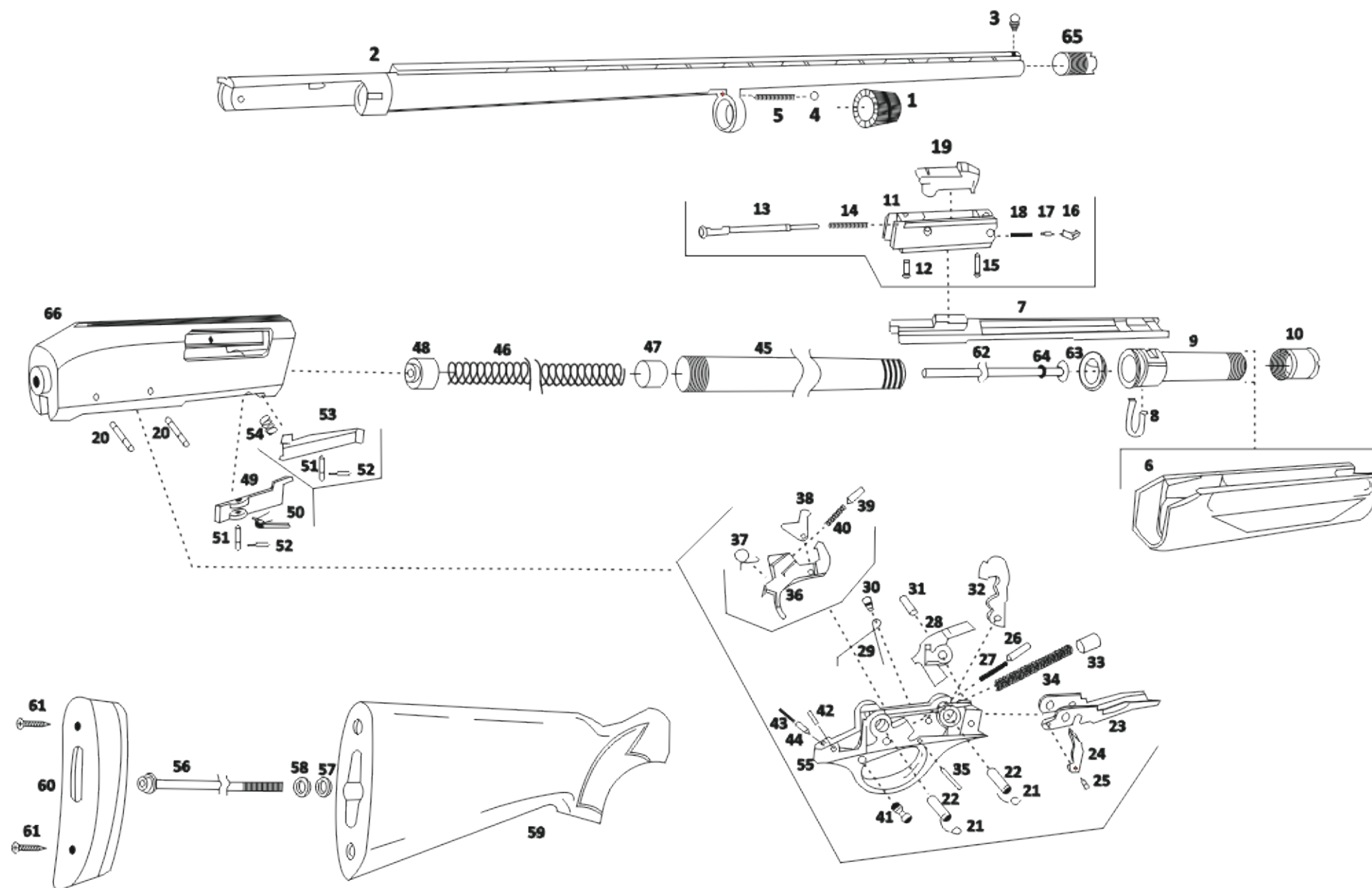
1. Control the direction of your firearm's muzzle. Carry your firearm safely, keeping the safety on until ready to shoot. Keep your finger off the trigger until ready to shoot.
2. Identify your target and what is beyond it. Know the identifying features of the game you hunt or the targets you intend to shoot.
3. Treat every firearm with the same respect due a loaded firearm.
4. Be sure the barrel and action are clear of obstructions and that you have only ammunition of proper size for the firearm you are carrying.
5. Whenever not in use, keep your firearm unloaded and store all ammunition in a separate location.
6. Never point a firearm at anything you do not want to shoot. Avoid all horseplay with a firearm.
7. Never climb a fence or tree, or jump a ditch or log, with a loaded firearm. Never pull a firearm toward you by the muzzle.
8. Never shoot at a flat hard surface or water. During target practice, be sure your backstop or shot-fall area is adequate.
9. Store firearms and ammunition separately beyond the reach of children and careless adults.
10. Avoid alcoholic beverages or other mood-altering drugs before or while shooting.

#### **EXERCISE EXTREME CAUTION**

Heed and follow these additional gun handling warnings whenever using any firearm

- Be sure the barrel is clear of any obstruction before loading. Make it a habit to check the barrel every time before reloading.
- Never place a loaded gun into a vehicle or lean the gun against any object. The gun should be emptied and placed into a case when not in use.
- Keep the safety on at all times. Move the safety to the "FIRE" position only when you are sure that a shot is imminent.
- While loading or unloading, make sure the gun is pointed in a safe direction. Keep your finger off the trigger while operating the action.
- Treat every gun as if it is loaded - it may be!
- If you do not thoroughly understand the proper use and care of your gun, seek the advice of someone you know is competent.

# EXPLODED DIAGRAM





## PART LIST

1)	Magazine cap	34)	Spring, hammer
2)	Barrel	35)	Pin, trigger pivot
3)	Front bead	36)	Trigger
4)	Detent, magazine cap	37)	Spring, trigger
5)	Spring, magazine cap detent	38)	Sear
6)	Forearm	39)	Cap, sear spring
7)	Slide arm	40)	Spring, sear
8)	Clip, slide arm retainer	41)	Safety
9)	Forearm tube	42)	Detent, safety
10)	Nut, forearm tube	43)	Spring, safety detent
11)	Bolt body	44)	Pin, safety spring retaining
12)	Pin, firing pin retaining	45)	Magazine tube
13)	Firing pin	46)	Spring, magazine
14)	Spring, firing pin	47)	Magazine spring retainer
15)	Pin, extractor retaining	48)	Magazine spring follower
16)	Extractor	49)	Feed latch
17)	Plunger, extractor	50)	Spring, feed latch
18)	Spring, extractor	51)	Pin, latch pivot (2)
19)	Locking block	52)	Retainer, latch pivot (2)
20)	Pin, trigger frame (2)	53)	Shell stop
21)	"D" ring, trigger frame pin 2	54)	Spring, shell stop
22)	Tube, trigger frame pin (2)	55)	Trigger guard housing
23)	Lifter	56)	Bolt, stock
24)	Lifter dog	57)	Washer, flat stock bolt
25)	Pin, lifter dog	58)	Washer, lock stock bolt
26)	Cap, lifter dog spring	59)	Stock
27)	Spring, lifter dog	60)	Recoil pad
28)	Slide lock lever	61)	Screw, recoil pad (2)
29)	Spring, slide lock lever	62)	Magazine blocker
30)	Stud, slide lock lever spring	63)	Retainer, magazine blocker
31)	Pin, hammer pivot	64)	"E" clip, magazine blocker
32)	Hammer	65)	Choke tube
33)	Cap, hammer spring		

# NOTES

.....

.....

.....

.....

.....

.....

.....

.....

.....

.....

.....

.....

.....

.....

.....

.....

.....

.....

.....

.....